

VCX200 RGB ELITE

Mid Tower

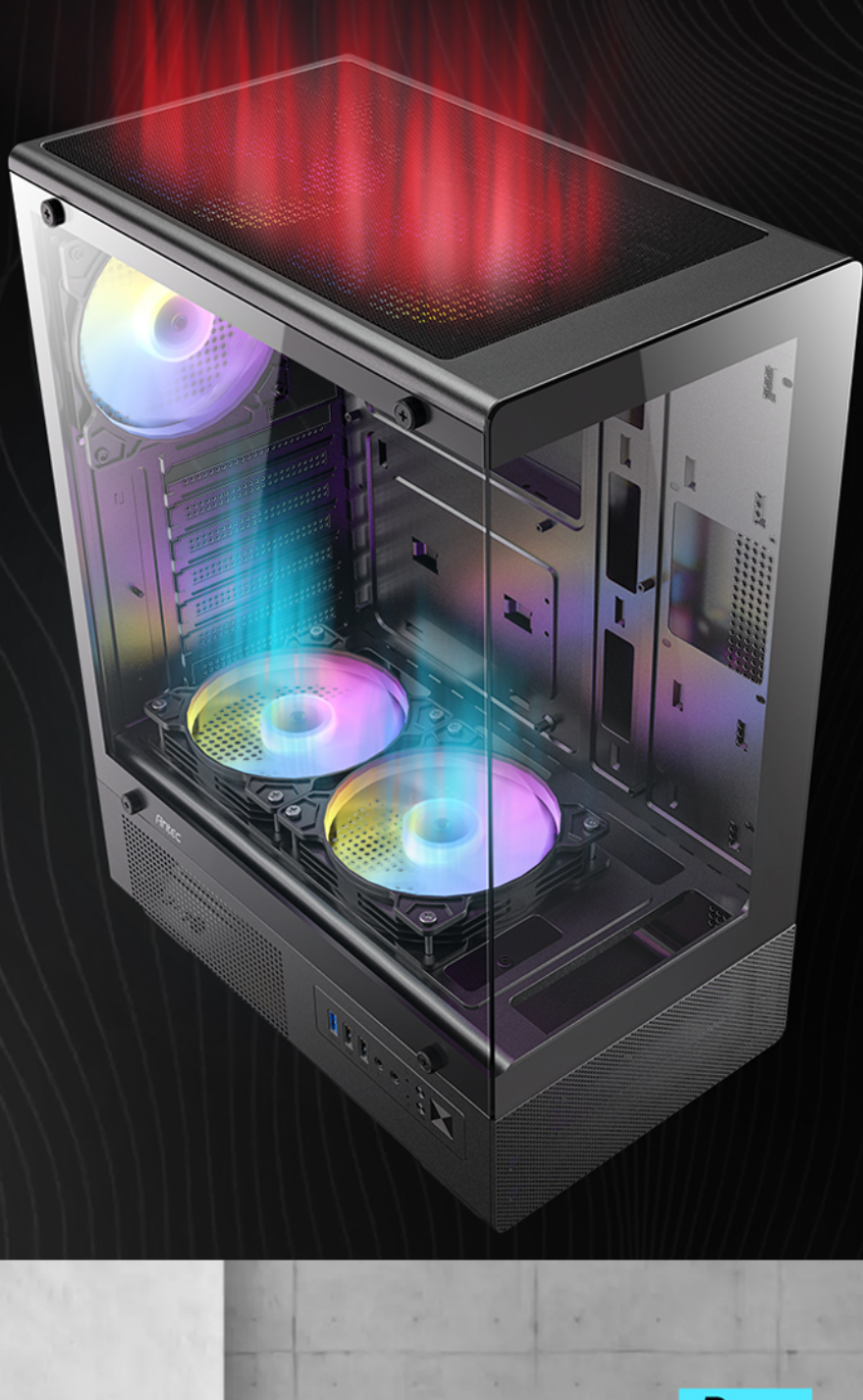


UNIQUE DESIGN & POWERFUL HEAT DISSIPATION

Designed for high-performance builds, ensuring excellent airflow and efficient heat dissipation.

PANORAMIC 270° VIEW

With an A-pillar-free full-view tempered glass panel, the VCX200 RGB Elite showcases your build with unmatched clarity, making it a true centerpiece of any setup.



OPTIMIZED VERTICAL AIRFLOW DESIGN

Enhances cooling efficiency with streamlined bottom-to-top airflow.

Rear



1 x 120mm fixed mode RGB fan

Top



2 x 120mm fixed mode RGB fans

PSU shroud



2 x 120mm fixed mode RGB Reserve fans

PRE-INSTALLED 5 X 120MM ARGB FANS

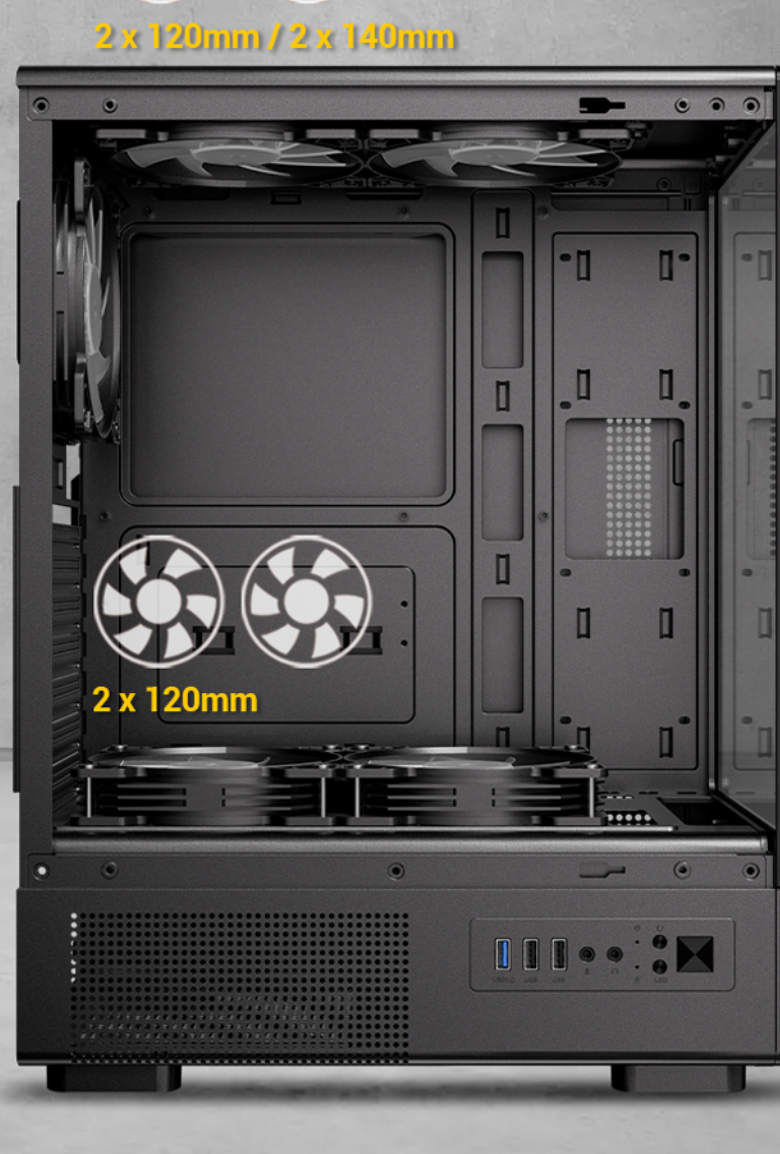


I/O PANEL

Power, Reset, LED Control Button, USB 2.0 x 2, USB 3.0 x 1, MIC/HD-AUDIO

2 x 120mm / 2 x 140mm

1 x 120mm



UP TO 5 X 120MM FANS SIMULTANEOUSLY

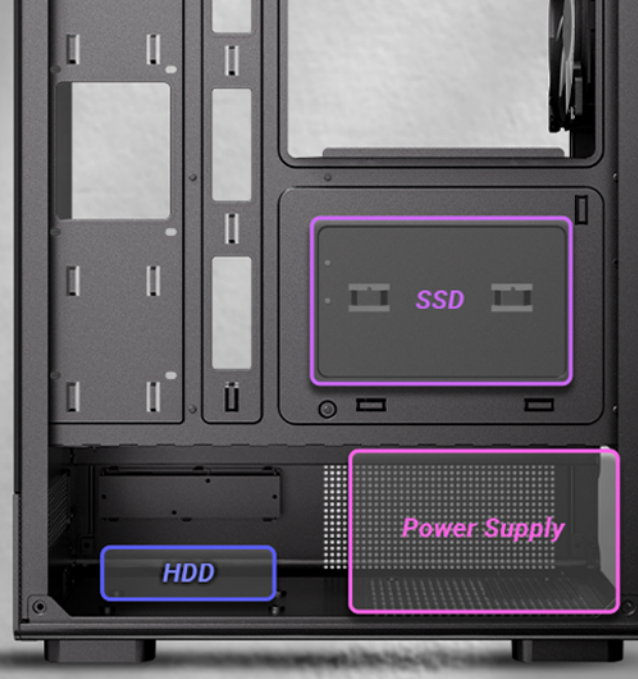
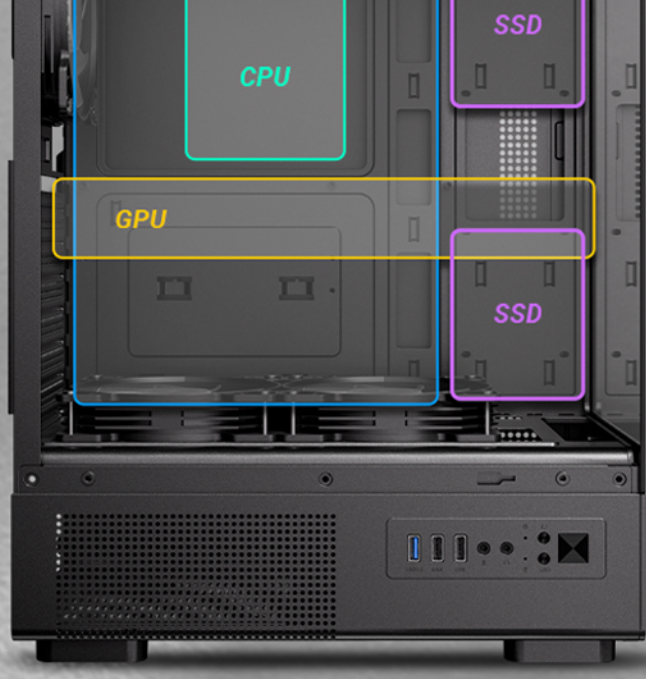
POWERFUL COOLING COMPATIBILITY

Max. CPU Cooler Height : 165mm. Supports most of the high-end air coolers.



COMPATIBILITY

• Motherboard support	ATX, Micro-ATX, ITX	• 2.5"	3
• CPU cooler max height	≤ 165 mm	• 3.5"	1
• GPU max length	≤ 320 mm	• Power Supply max length	(Include cable) ≤ 165mm(with HDD) (Include cable) ≤ 325mm(without HDD)



UNLIMITED PERFORMANCE

Max. GPU Length : 320mm



DIMENSIONS

342 x 205 x 450 mm (DWH)

450 mm



SPECIFICATIONS

Main Spec

Motherboard Support	ATX, Micro-ATX, ITX
Form Factor	Mid Tower
Case Material	Steel + Plastic
Side Window Material	Tempered glass
I/O Ports	Power, Reset, LED Control Button, USB 2.0 x 2, USB 3.0 x 1, MIC/HD-AUDIO

Compatibility & Clearances

CPU Cooler Max Height	≤ 165mm
GPU Max Length	≤ 320mm
Max PSU Length	(Include cable) ≤ 165mm(with HDD) (Include cable) ≤ 325mm(without HDD)

Fan Support

Top	2 x 120mm / 2 x 140mm
PSU Shroud	2 x 120mm
Rear	1 x 120mm

Expansion Slots

Standard	7
----------	---

Drive Bays

3.5"	1
2.5"	3

Dimensions

Box Dimensions	342 x 205 x 450 mm (DWH)
Case Dimensions	480 x 240 x 414mm (DWH)
Net weight	4.0Kg
Gross weight	4.8 Kg

Accessories

Included Fans	2 x 120mm fixed mode RGB fans on top + 2 x 120mm fixed mode RGB Reverse fans on PSU shroud + 1 x 120mm fixed mode RGB fan in rear
---------------	---

General

Dust Filter	Top
Warranty	1 Year
UPC#	0-761345-10193-6

